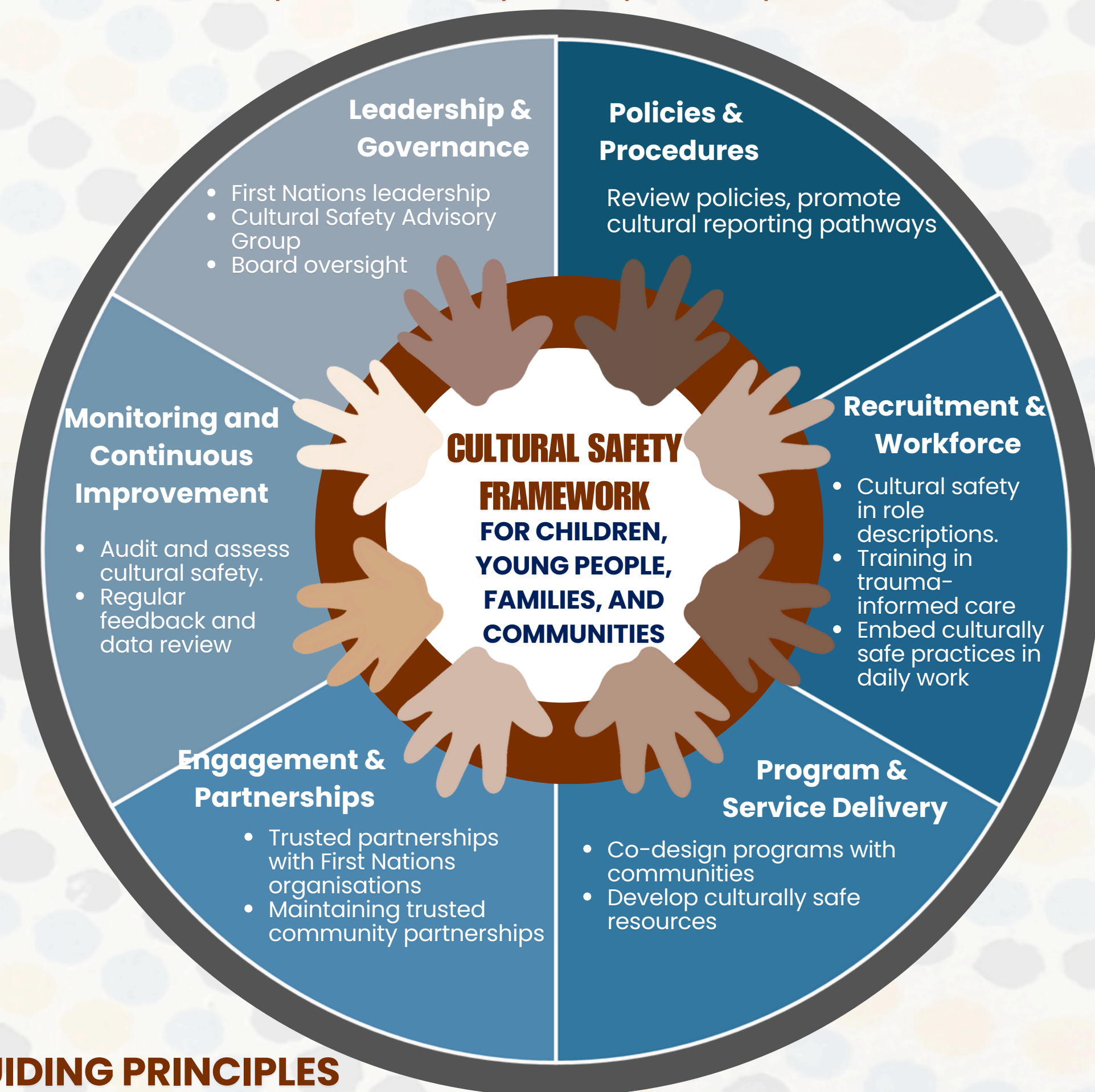


momentum
MENTAL HEALTH

CULTURAL SAFETY FRAMEWORK

FOR CHILDREN, YOUNG PEOPLE, ADULTS, FAMILIES, AND COMMUNITIES



GUIDING PRINCIPLES



Child-Centred

Prioritise the rights, wellbeing and voices of young people and children.



Diversity & Inclusion

Treat all children, families and communities with fairness and respect.



First Nations Leadership & Knowledge

Embed Aboriginal and Torres Strait Islander perspectives in policies, programs, and governance.



Accountable Actions

Embed Aboriginal and Torres Strait Islander perspectives in policies, programs, and governance.

REPORTING & ACCOUNTABILITY

- Provide safe and culturally appropriate pathways to report concerns
- Investigate complaints sensitively and ensure follow-up actions reinforce cultural safety.
- Report on cultural safety outcomes and improvements to the Board, staff, and community.

EVALUATION & REVIEW

- Annual review of the framework to ensure alignment with the Universal Principle and Child Safe Standards.
- Incorporate feedback from children, families, staff, and First Nations communities to improve effectiveness.
- Update training, policies, and programs based on emerging evidence, research, and sector best practice.